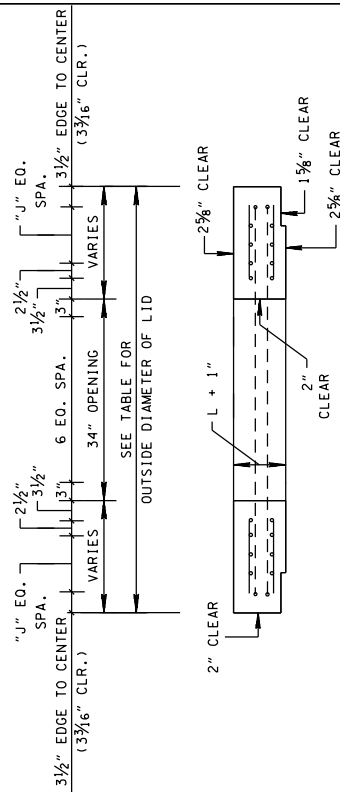
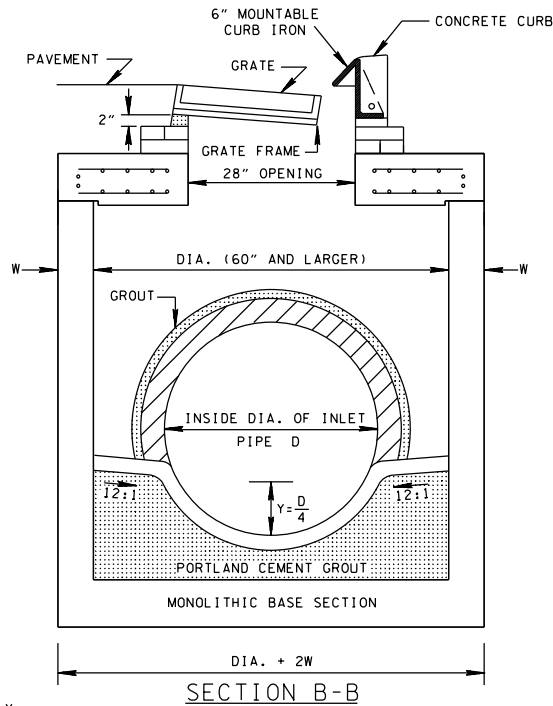
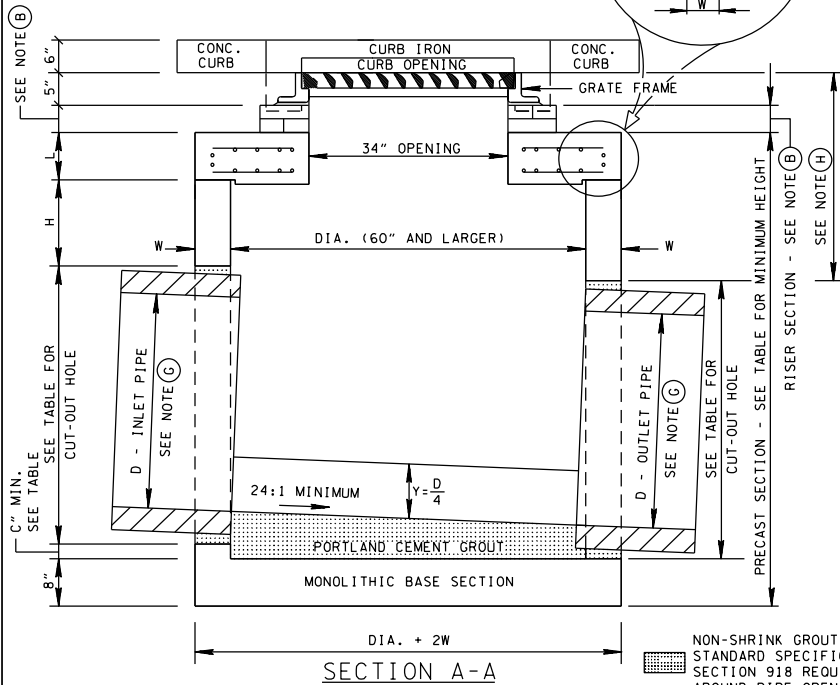
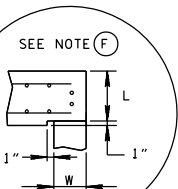


VARIABLE REINFORCING DIMENSIONS AND SPACING IN CONCRETE LID		
INSIDE DIA. OF CATCH BASIN (INCHES)	OUTSIDE DIA. OF LID (INCHES)	NO. OF EQUAL SPACES "J"
60	72	3
72	86	4
84	100	5
96	114	6

OUT-TO-OUT DIAMETER FOR T501 REINFORCING BARS EQUALS OUTSIDE DIAMETER OF LID MINUS 6 3/8 INCHES.

ADDITIONAL A-BARS ARE REQUIRED FOR THE LARGER STRUCTURE. ADDITIONAL BARS SHALL BE #5 FOR 72 INCH INSIDE DIAMETER AND #6 FOR 84 INCH AND 96 INCH INSIDE DIAMETER AS INDICATED BY "NO. OF EQ. SPACES 'J'".



REV. 3-11-14: ELIMINATED STIRRUPS.
REV. 1-27-16: CORRECTED GENERAL NOTE ④

REV. 1-19-99: CHANGED MINIMUM DEPTH TABLE AND DRAWING IN GENERAL TO REFLECT REDUCTION IN INVERT DROP ACROSS CATCH BASIN.
REV. 5-27-01: CHANGED PAY ITEMS IN GENERAL NOTE ①. ADDED CATCH BASIN MAXIMUM DEPTH NOTE.
CHANGED REINFORCING STEEL IN LID.

REV. 8-01-12: REVISED CATCH BASIN LID FOR COMPLIANCE WITH AASHTO LRFD BRIDGE DESIGN SPECIFICATIONS, 4TH EDITION WITH INTERIMS. REVISED REINFORCING, GENERAL NOTES AND ADDITIONAL MISC. DRAFTING EDITS.
REV. 9-24-12: MODIFIED TOP SLAB AND MINIMUM DEPTH.

CATCH BASIN MAXIMUM DEPTH NOTE
MAXIMUM DEPTH FOR THIS STRUCTURE IS 40.00'.

CATCH BASIN DIMENSIONS				FOR DESIGN USE ONLY CATCH BASIN MINIMUM DESIGN DEPTH (FEET)			
INSIDE DIAMETER (D) OF PIPE (INCHES)	PIPE WALL THICKNESS (INCHES)	DIAMETER OF CUT-OUT HOLES (INCHES)	PRECAST SECTION MIN. HEIGHTS (INCHES)				
			60"	72"	84"	96"	
18	2 1/2	25	51 1/2	53	57 1/2	59	3.92 3.97 4.34 4.38
24	3	32	58 1/2	60	64 1/2	66	4.46 4.51 4.88 4.92
30	3 1/2	39	65 1/2	67	71 1/2	73	5.00 5.05 5.42 5.46
36	4	46	72 1/2	74	78 1/2	80	5.55 5.59 5.97 6.00
42	4 1/2	53	79 1/2	81	85 1/2	87	6.09 6.13 6.51 6.54
48	5	60	86 1/2	88	92 1/2	94	6.63 6.67 7.05 7.08
54	5 1/2	67	93 1/2	95	99 1/2	101	7.17 7.22 7.59 7.63
60	6	74	100 1/2	102	106 1/2	108	7.71 7.76 8.13 8.17
66	6 1/2	81	107 1/2	109	113 1/2	115	8.25 8.30 8.67 8.71

- ① CUT-OUT HOLES BASED ON REINFORCED CONCRETE PIPE WITH WALL TYPE "B".
- ② ALL FLEXIBLE PIPE MATERIALS REQUIRE GASKET. SEE STANDARD DRAWING D-PB-2.
- ③ CUT-OUT HOLES FOR PRECAST STRUCTURES TO BE FORMED IN ORDER TO OBTAIN A SMOOTH EDGED HOLE. SCORED OR ETCHED HOLES WITH REINFORCING STEEL LEFT UN CUT WILL NOT BE PERMITTED.

GENERAL NOTES

- (A) ALL PRECAST ELEMENTS TO MEET ASTM C478 (CURRENT EDITION) AND AASHTO M199 (CURRENT EDITION) UNLESS SUPERSEDED BY THIS DRAWING.
- CONCRETE: $f'_c = 4,000$ POUNDS PER SQUARE INCH AT 28 DAYS
REINFORCING STEEL: ASTM A615, $F_y = 60,000$ POUNDS PER SQUARE INCH
ALL REINFORCING IS TO BE INSTALLED AS DETAILED ON THIS DRAWING.
- (B) THIS DIMENSION MAY VARY FROM A MINIMUM OF 0 INCHES TO A MAXIMUM OF 24 INCHES AS LONG AS 23 INCHES (FOR 60 OR 72 INCH INSIDE DIAMETER CATCH BASIN) OR 27 INCHES (FOR 84 OR 96 INCH INSIDE DIAMETER CATCH BASIN) IS SATISFIED. THE CONTRACTOR HAS THE OPTION OF USING BRICK OR STANDARD PRECAST CONCRETE RISER FRAMES. THE USE OF BRICK SHALL BE LIMITED TO 6 INCHES. IF THIS DIMENSION EXCEEDS 6 INCHES, PRECAST CONCRETE RISER FRAMES SHALL BE USED AS SHOWN ON STANDARD DRAWING D-RF-1.
- (C) PRECAST CATCH BASIN UNITS WHICH ARE DAMAGED DURING SHIPMENT OR INSTALLATION WILL BE REJECTED. IT SHALL BE THE RESPONSIBILITY OF THE CONTRACTOR TO REPLACE DAMAGED CATCH BASIN UNITS AT HIS OWN EXPENSE.
- (D) APPROPRIATE SIZING AND LOCATION OF LIFTING DEVICES SHALL BE THE RESPONSIBILITY OF THE FABRICATOR.
- (E) THE CONTRACTOR IS TO PATCH ALL LIFTING DEVICE HOLES WITH GROUT AND PLACE A MINIMUM OF ONE (1) INCH OF COVER OVER THE HARDWARE OF THESE DEVICES ON BOTH TOP AND BOTTOM SURFACES.
- (F) ALTERNATIVE JOINT DETAILS MAY BE ACCEPTABLE. SEE STANDARD DRAWING D-CB-99R FOR ADDITIONAL DETAILS.
- (G) SEE ROADWAY PLANS DRAINAGE TABULATION FOR PIPE INLET AND OUTLET ELEVATIONS. IF NEEDED, INVERT ELEVATIONS MAY BE ADJUSTED AS DIRECTED BY THE ENGINEER IN ORDER TO ACCOMMODATE INLET AND OUTLET PIPES.
- (H) FOR CASES WHERE THE OUTLET PIPE DIAMETER IS LARGER THAN THE INLET PIPE DIAMETER, A MINIMUM 23 INCH DEPTH (FOR 60 OR 72 INCH INSIDE DIAMETER CATCH BASIN) OR 27 INCH DEPTH (FOR 84 OR 96 INCH INSIDE DIAMETER CATCH BASIN) SHALL BE MAINTAINED ABOVE THE OUTLET PIPE.
- (I) SEE STANDARD DRAWING D-CBB-12B FOR DETAILS REGARDING CAST IRON GRATES, FRAMES AND CURB INLETS.
- (J) SEE STANDARD DRAWING D-CB-25RA FOR DETAILS REGARDING 48" CIRCULAR NO. 25 CATCH BASIN (FOR USE WITH 6" MOUNTABLE CURB).
- (K) PAY DEPTH MEASUREMENT MADE FROM TOP OF GRATE TO OUTLET FLOW ELEVATION. PAYMENT FOR CATCH BASIN WILL BE MADE UNDER ITEM NUMBERS 611-25.01 CATCH BASINS, TYPE 25, 0'-4' DEPTH THROUGH 611-25.07, CATCH BASINS, TYPE 25, > 24'-28' DEPTH PER EACH. PAYMENT FOR CATCH BASINS DEEPER THAN 28' WILL BE MADE UNDER ITEM NUMBER 611-25.08, CATCH BASINS, TYPE 25, ---'- ---' DEPTH PER EACH. PAYMENT INCLUDES RISER SECTION AND GRATE.

CATCH BASIN DIMENSIONS							
INSIDE DIA. OF CATCH BASIN DIA. (INCHES)	WALL THICKNESS W (INCHES)	LID THICKNESS L (INCHES)	OUTSIDE DIA. OF CATCH BASIN DIA. + 2W (INCHES)	MAX. INLET OR OUTLET CONC. PIPE SIZE - STR. (INCHES)	MAX. INLET OR OUTLET CONC. PIPE SIZE - 90° (INCHES)	DIMENSION	
						C (INCHES)	H (INCHES)
60	6	10	72	36	24	2.5	8
72	7	10	86	48	30	3.0	8
84	8	10	100	60	36	3.5	12
96	9	10	114	66	42	4.0	12

MINOR REVISION -- FHWA APPROVAL NOT REQUIRED.

STATE OF TENNESSEE
DEPARTMENT OF TRANSPORTATION

STANDARD PRECAST
CIRCULAR NO. 25
CATCH BASIN

(FOR USE WITH 6" MOUNTABLE CURB)

NOT TO SCALE 12-18-93 D-CB-25RB